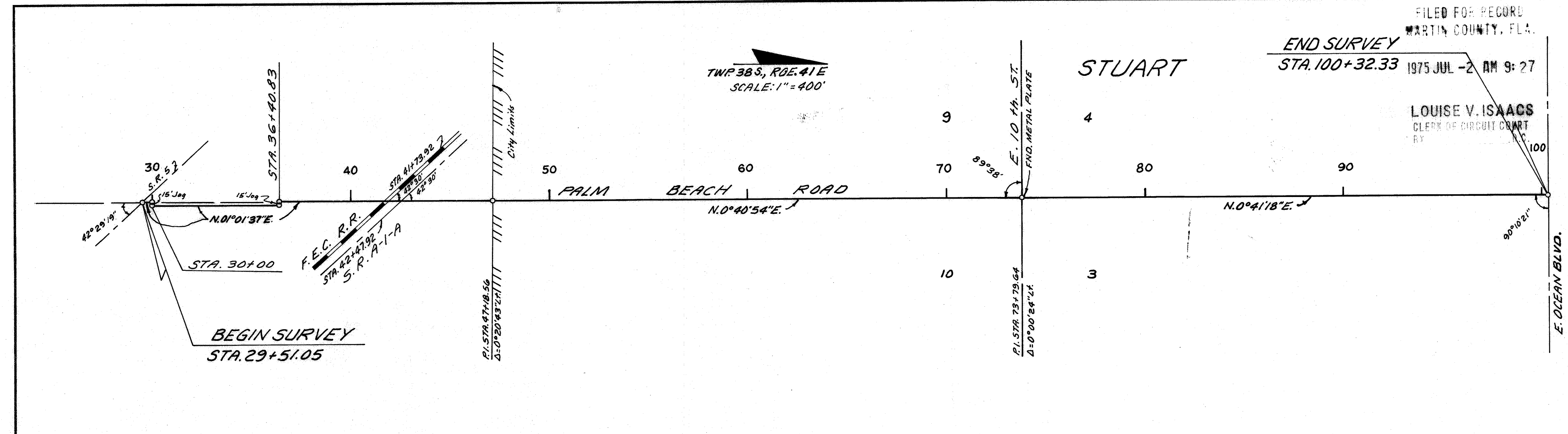


6-91

229464



FILED FOR RECORD
MARTIN COUNTY, FLA.

END SURVEY
STA. 100+32.33 1975 JUL -2 AM 9: 27

LOUISE V. ISAACS
CLERK OF CIRCUIT COURT
BY

I, Billy G. Pelham, as Director of Administration of the State of Florida Department of Transportation, do hereby certify that this map is the Official Map of Location and Survey of a portion of Section 89513 in Martin County, Florida. Said portion of Section 89513, extending from State Road 5 Northerly along Palm Beach Road to E. Ocean Boulevard in Stuart.
Prepared and adopted by the State of Florida Department of Transportation under provisions of Section 335.02, Florida Statutes of 1955.

Filed for record in the Office of the Clerk of the Circuit Court for the County of Martin, State of Florida, in Map Book 6, Page 91 on the 2nd day of July, A.D. 1975.

Billy G. Pelham
Director of Administration
State of Florida Department of Transportation

Attest: Casely Scarab
Executive Secretary

Approved: L. E. Ward
Engineer of Right of Way
Date: 6-3-75
Sec. 89513-2601

LOUISE V. ISAACS - By Charlotte Burkey, P.C.
Clerk of the Circuit Court
Martin County, Florida
Martin Co. dds